

\$0 - 202 16813 113 Avenue, Edmonton

MLS® #E4396075

\$0

0 Bedroom, 0.00 Bathroom,
Office on 0.00 Acres

West Sheffield Industrial, Edmonton, AB

Fully Furnished 2nd floor office for lease.
Reception area plus 5 offices, large board room, Kitchen plus storage areas. Location is accessible from 170 street making it ideal location for a growing business. Plenty of parking .

Built in 1980

Essential Information

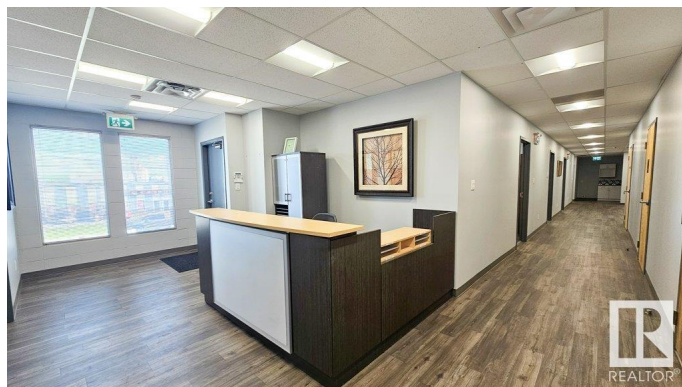
| | |
|------------|----------|
| MLS® # | E4396075 |
| Bathrooms | 0.00 |
| Acres | 0.00 |
| Year Built | 1980 |
| Type | Office |
| Status | Active |

Community Information

| | |
|-------------|---------------------------|
| Address | 202 16813 113 Avenue |
| Area | Edmonton |
| Subdivision | West Sheffield Industrial |
| City | Edmonton |
| County | ALBERTA |
| Province | AB |
| Postal Code | T5M 2X2 |

Exterior

| | |
|----------|----------|
| Exterior | Concrete |
|----------|----------|



Construction Concrete

Additional Information

Date Listed July 4th, 2024

Days on Market 381

Zoning Zone 40

DATA IS DEEMED RELIABLE BUT IS NOT GUARANTEED ACCURATE BY THE REALTORS® ASSOCIATION OF EDMONTON. COPYRIGHT 2025 BY THE REALTORS® ASSOCIATION OF EDMONTON. ALL RIGHTS RESERVED.Trademarks are owned or controlled by the Canadian Real Estate Association (CREA) and identify real estate professionals who are members of CREA (REALTOR®, REALTORS®) and/or the quality of services they provide (MLS®, Multiple Listing Service®)

Listing information last updated on July 20th, 2025 at 8:02pm MDT