

Courtesy Of Chris Squires and Jen A Armstrong Of Realty Unleashed Inc

\$0 - 2 16153 142 Street, Edmonton

MLS® #E4420991

\$0

0 Bedroom, 0.00 Bathroom,
Office on 0.00 Acres

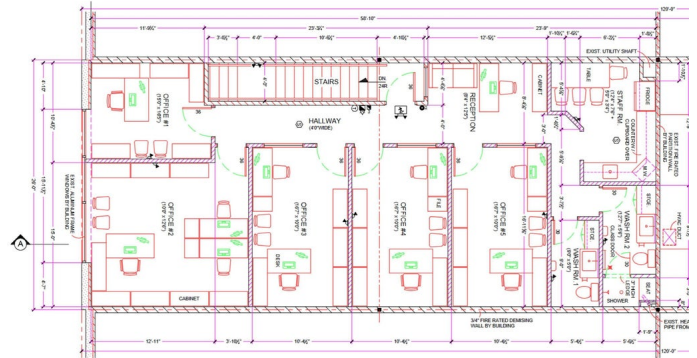
Rampart Industrial, Edmonton, AB

Let your business thrive in this thoughtfully designed 1,524 sq. ft. second floor office space, where functionality seamlessly meets comfort. For just \$2,400 per month, everything is included, making it a hassle-free opportunity. The layout features five private offices, providing your team with the ideal space to work both independently and collaboratively, fostering productivity and innovation. A welcoming reception area creates a professional first impression, while the fully-equipped staff room, complete with a convenient kitchenette, offers a perfect place to recharge. After a workout or a busy morning, you can freshen up in the office's own 3-piece bathroom with a shower, ensuring you're always ready for the day ahead. A second bathroom is also conveniently located just next door. Located just minutes from St. Albert Trail and Anthony Henday Drive, this prime office space offers easy access to major routes, making commuting and business connections a breeze.

Built in 2015

Essential Information

| | |
|-----------|----------|
| MLS® # | E4420991 |
| Bathrooms | 0.00 |
| Acres | 0.00 |



| | |
|------------|--------|
| Year Built | 2015 |
| Type | Office |
| Status | Active |

Community Information

| | |
|-------------|--------------------|
| Address | 2 16153 142 Street |
| Area | Edmonton |
| Subdivision | Rampart Industrial |
| City | Edmonton |
| County | ALBERTA |
| Province | AB |
| Postal Code | T6V 0M7 |

Exterior

| | |
|--------------|-------|
| Exterior | Block |
| Construction | Block |

Additional Information

| | |
|----------------|---------------------|
| Date Listed | February 10th, 2025 |
| Days on Market | 72 |
| Zoning | Zone 40 |

DATA IS DEEMED RELIABLE BUT IS NOT GUARANTEED ACCURATE BY THE REALTORS® ASSOCIATION OF EDMONTON. COPYRIGHT 2025 BY THE REALTORS® ASSOCIATION OF EDMONTON. ALL RIGHTS RESERVED. Trademarks are owned or controlled by the Canadian Real Estate Association (CREA) and identify real estate professionals who are members of CREA (REALTOR®, REALTORS®) and/or the quality of services they provide (MLS®, Multiple Listing Service®)

Listing information last updated on April 23rd, 2025 at 10:32am MDT