

\$279,000 - 456 1818 Rutherford Road, Edmonton

MLS® #E4423888

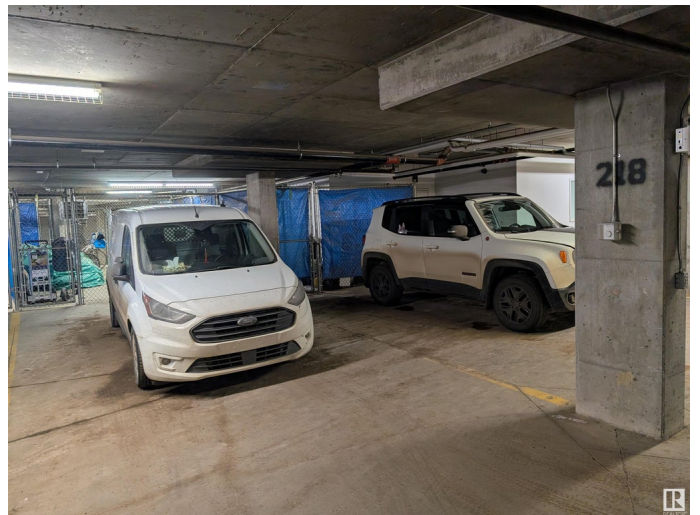
\$279,000

2 Bedroom, 2.00 Bathroom, 1,100 sqft
Condo / Townhouse on 0.00 Acres

Rutherford (Edmonton), Edmonton, AB

Top floor end unit. Two bedroom plus den with 1100 ft². 9 foot ceiling insuite laundry extra large balcony. Kitchen featured quartz countertop, back splash, white cabinet and upgraded stainless steel appliances. Two titled parking stalls. One underground and one surface stall. Underground parking with huge storage cage Car wash bay. Walking distance to school and park. Quick access to Anthony Henday highway and public transportation. Building is well managed. Plenty of visitor parking.

Built in 2019



Essential Information

MLS® #	E4423888
Price	\$279,000
Bedrooms	2
Bathrooms	2.00
Full Baths	2
Square Footage	1,100
Acres	0.00
Year Built	2019
Type	Condo / Townhouse
Sub-Type	Lowrise Apartment
Style	Single Level Apartment
Status	Active

Community Information

Address	456 1818 Rutherford Road
Area	Edmonton
Subdivision	Rutherford (Edmonton)
City	Edmonton
County	ALBERTA
Province	AB
Postal Code	T6W 2K6

Amenities

Amenities	Car Wash
Parking	Heated, Stall, Underground

Interior

Interior Features	ensuite bathroom
Appliances	Dishwasher-Built-In, Dryer, Hood Fan, Microwave Hood Fan, Refrigerator, Stove-Electric, Washer, Window Coverings
Heating	Baseboard, Hot Water, Natural Gas
# of Stories	4
Stories	1
Has Basement	Yes
Basement	None, No Basement

Exterior

Exterior	Wood, Brick, Vinyl
Exterior Features	Fenced, Landscaped, Low Maintenance Landscape
Roof	Asphalt Shingles
Construction	Wood, Brick, Vinyl
Foundation	Concrete Perimeter

Additional Information

Date Listed	March 3rd, 2025
Days on Market	11
Zoning	Zone 55
Condo Fee	\$501

DATA IS DEEMED RELIABLE BUT IS NOT GUARANTEED ACCURATE BY THE REALTORS® ASSOCIATION OF EDMONTON. COPYRIGHT 2025 BY THE REALTORS® ASSOCIATION OF EDMONTON. ALL RIGHTS RESERVED. Trademarks are owned or controlled by the Canadian Real Estate Association (CREA) and identify real estate professionals who are members of CREA (REALTOR®, REALTORS®) and/or the quality of services they provide (MLS®, Multiple Listing Service®)

Listing information last updated on March 14th, 2025 at 5:02pm MDT