

## \$330,000 - 19 14603 Miller, Edmonton

MLS® #E4427428

**\$330,000**

3 Bedroom, 1.50 Bathroom, 1,214 sqft  
Condo / Townhouse on 0.00 Acres

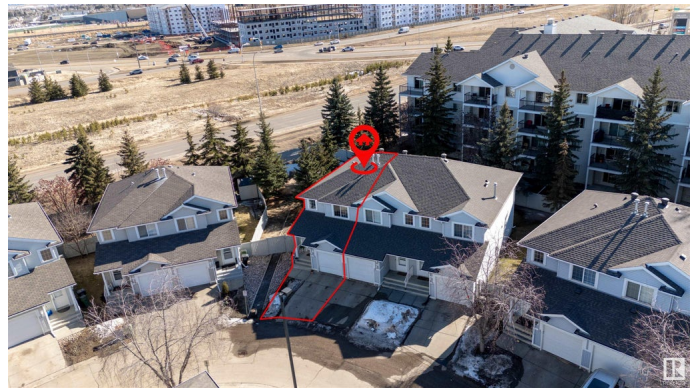
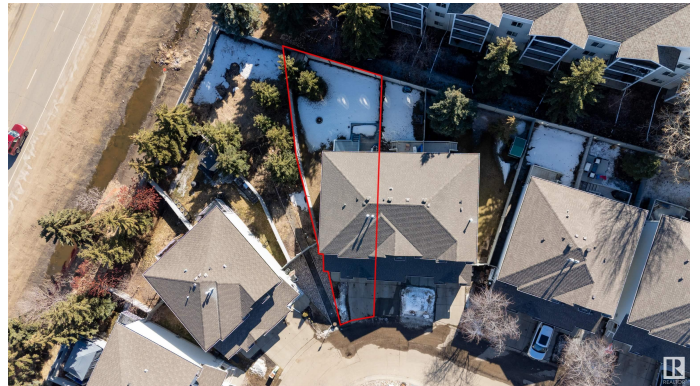
Miller, Edmonton, AB

**\*\*Amazing Opportunity!\*\*** This beautifully maintained 3-bedroom, corner-unit half duplex is located in the sought-after Summerhill Park neighborhood. Conveniently close to all amenities, including shopping, public transport, the LRT, and easy access to Manning Drive, this home offers both comfort and practicality. The main floor boasts a stunning U-shaped kitchen with a raised eating bar and abundant storage, perfect for your culinary needs. Adjacent to the kitchen, the dining area seamlessly connects to the cozy living room, complete with a fireplace that creates a warm and welcoming atmosphere. Bright patio doors open from this inviting living space onto a private deck, leading to a generously sized backyard, ideal for enjoying the great outdoors. Upstairs, you'll find three spacious bedrooms and a well-appointed bathroom. The fully developed basement adds extra value, featuring an open family room and a separate laundry area. With a total of 3 bedrooms, a fully developed basement, an attached garage

Built in 2002

### Essential Information

MLS® #	E4427428
Price	\$330,000
Bedrooms	3



Bathrooms	1.50
Full Baths	1
Half Baths	1
Square Footage	1,214
Acres	0.00
Year Built	2002
Type	Condo / Townhouse
Sub-Type	Half Duplex
Style	2 Storey
Status	Active

### **Community Information**

Address	19 14603 Miller
Area	Edmonton
Subdivision	Miller
City	Edmonton
County	ALBERTA
Province	AB
Postal Code	T5Y 3B6

### **Amenities**

Amenities	See Remarks
Parking	Single Garage Attached

### **Interior**

Appliances	Dishwasher-Built-In, Hood Fan, Refrigerator, Stove-Electric, Washer
Heating	Forced Air-1, Natural Gas
Stories	3
Has Basement	Yes
Basement	Full, Finished

### **Exterior**

Exterior	Wood, Vinyl
Exterior Features	Corner Lot, Public Transportation, Schools
Roof	Asphalt Shingles
Construction	Wood, Vinyl
Foundation	Concrete Perimeter

### **Additional Information**

Date Listed	March 25th, 2025
Days on Market	14
Zoning	Zone 02
Condo Fee	\$179

DATA IS DEEMED RELIABLE BUT IS NOT GUARANTEED ACCURATE BY THE REALTORS® ASSOCIATION OF EDMONTON. COPYRIGHT 2025 BY THE REALTORS® ASSOCIATION OF EDMONTON. ALL RIGHTS RESERVED. Trademarks are owned or controlled by the Canadian Real Estate Association (CREA) and identify real estate professionals who are members of CREA (REALTOR®, REALTORS®) and/or the quality of services they provide (MLS®, Multiple Listing Service®)

Listing information last updated on April 8th, 2025 at 2:32pm MDT