

\$279,990 - 7d Twin Terrace, Edmonton

MLS® #E4429338

\$279,990

3 Bedroom, 1.50 Bathroom, 1,076 sqft
Condo / Townhouse on 0.00 Acres

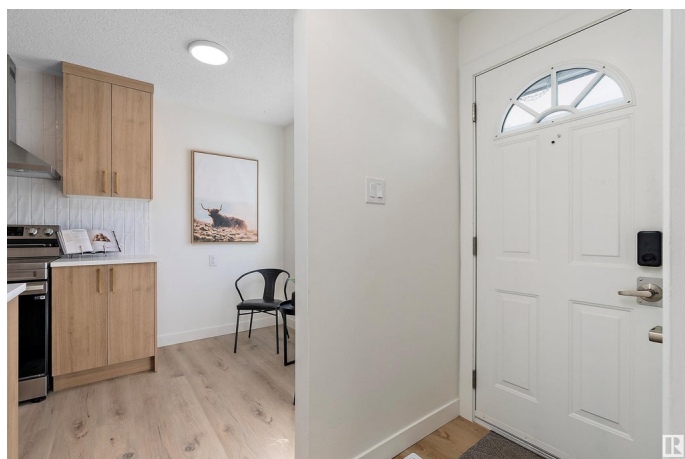
Tweddle Place, Edmonton, AB

Fully renovated corner-unit townhouse in Twin Terrace! This 1075 sq/ft home offers 3 bedrooms, 2 bathrooms, and is perfect for a growing family. The bright kitchen features all-new finishes and appliances, plus a dining area and cozy breakfast nook to enjoy the morning sun. The spacious main floor includes a large living area with both front and back doors opening to your fenced yard—perfect for kids and pets. Upstairs you'll find 3 generous bedrooms with ample closet space and a beautifully updated full bath. The basement is framed and ready for a 4th bedroom, office, or storage space. High-efficiency furnace, newer water heater, and a brand new laundry pair make this home move-in ready!

Built in 1975

Essential Information

MLS® #	E4429338
Price	\$279,990
Bedrooms	3
Bathrooms	1.50
Full Baths	1
Half Baths	1
Square Footage	1,076
Acres	0.00



Year Built	1975
Type	Condo / Townhouse
Sub-Type	Townhouse
Style	2 Storey
Status	Active

Community Information

Address	7d Twin Terrace
Area	Edmonton
Subdivision	Tweddle Place
City	Edmonton
County	ALBERTA
Province	AB
Postal Code	T6K 1V4

Amenities

Amenities	Hot Water Natural Gas, No Animal Home, No Smoking Home, Parking-Visitor
Parking	Stall

Interior

Appliances	Dishwasher-Built-In, Dryer, Refrigerator, Stove-Electric, Washer
Heating	Forced Air-1, Natural Gas
Stories	2
Has Basement	Yes
Basement	Full, Partially Finished

Exterior

Exterior	Wood, Stucco, Vinyl
Exterior Features	Fenced, Playground Nearby, Public Transportation, Recreation Use, Schools, Shopping Nearby
Roof	Asphalt Shingles
Construction	Wood, Stucco, Vinyl
Foundation	Concrete Perimeter

Additional Information

Date Listed	April 5th, 2025
Days on Market	3
Zoning	Zone 29

Condo Fee \$295

DATA IS DEEMED RELIABLE BUT IS NOT GUARANTEED ACCURATE BY THE REALTORS® ASSOCIATION OF EDMONTON. COPYRIGHT 2025 BY THE REALTORS® ASSOCIATION OF EDMONTON. ALL RIGHTS RESERVED. Trademarks are owned or controlled by the Canadian Real Estate Association (CREA) and identify real estate professionals who are members of CREA (REALTOR®, REALTORS®) and/or the quality of services they provide (MLS®, Multiple Listing Service®)

Listing information last updated on April 8th, 2025 at 2:32pm MDT