

\$197,500 - 201 151 Edwards Drive, Edmonton

MLS® #E4429906

\$197,500

3 Bedroom, 2.00 Bathroom, 1,076 sqft
Condo / Townhouse on 0.00 Acres

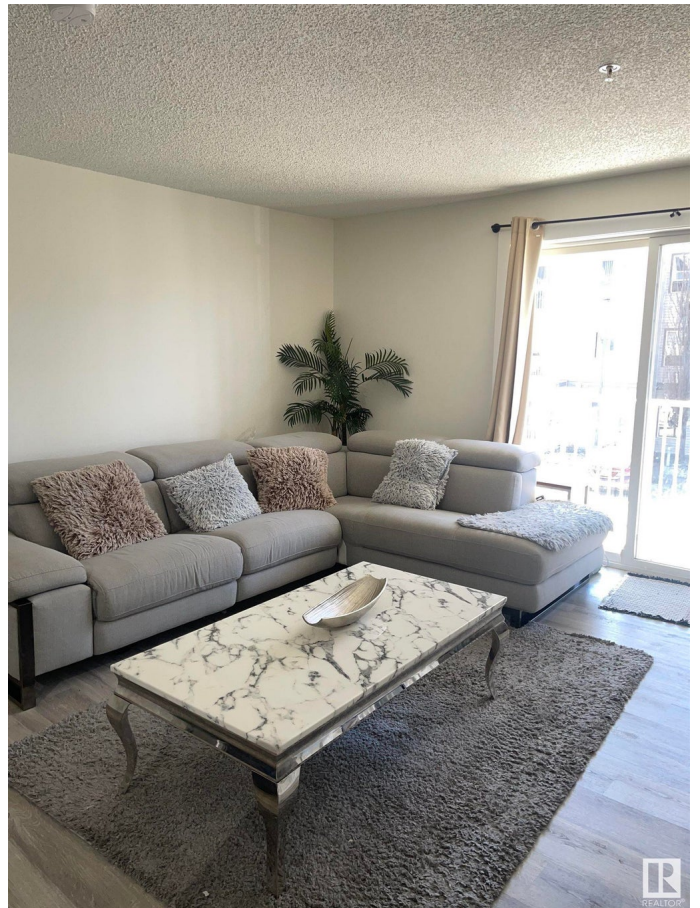
Ellerslie, Edmonton, AB

SUPER RARE 3 BDRM CORNER UNIT with over 1000 sqft. This unit has been completely renovated. Its bright and open with primary off living room with ensuite and walk thru closet. In suite laundry plus two additional perfectly sized bedrooms - one with big corner windows!! In between there's a generous 4 piece bathroom. Tenant would be happy to stay if an investment property is what you're after. This complex is close to schools, pet friendly with b/a there's also a gym to enjoy and a little park area near by plus heat and water included. Come check it out!

Built in 2005

Essential Information

MLS® #	E4429906
Price	\$197,500
Bedrooms	3
Bathrooms	2.00
Full Baths	2
Square Footage	1,076
Acres	0.00
Year Built	2005
Type	Condo / Townhouse
Sub-Type	Lowrise Apartment
Style	Single Level Apartment
Status	Active



Community Information

Address	201 151 Edwards Drive
Area	Edmonton
Subdivision	Ellerslie
City	Edmonton
County	ALBERTA
Province	AB
Postal Code	T6X 1N5

Amenities

Amenities	On Street Parking, Closet Organizers, Detectors Smoke, Exercise Room, Intercom, No Animal Home, No Smoking Home, Parking-Visitor, Security Door, Vinyl Windows
Parking	Stall

Interior

Interior Features	ensuite bathroom
Appliances	Dishwasher-Built-In, Hood Fan, Refrigerator, Stacked Washer/Dryer, Stove-Electric
Heating	Baseboard, Hot Water, Natural Gas
# of Stories	3
Stories	1
Has Basement	Yes
Basement	None, No Basement

Exterior

Exterior	Wood, Stone, Vinyl
Exterior Features	Airport Nearby, Fenced, Low Maintenance Landscape, Schools, Shopping Nearby
Roof	Asphalt Shingles
Construction	Wood, Stone, Vinyl
Foundation	Concrete Perimeter

Additional Information

Date Listed	April 9th, 2025
Days on Market	15
Zoning	Zone 53
Condo Fee	\$677

DATA IS DEEMED RELIABLE BUT IS NOT GUARANTEED ACCURATE BY THE REALTORS® ASSOCIATION OF EDMONTON. COPYRIGHT 2025 BY THE REALTORS® ASSOCIATION OF EDMONTON. ALL RIGHTS

RESERVED. Trademarks are owned or controlled by the Canadian Real Estate Association (CREA) and identify real estate professionals who are members of CREA (REALTOR®®, REALTORS®®) and/or the quality of services they provide (MLS®®, Multiple Listing Service®®)

Listing information last updated on April 24th, 2025 at 5:17am MDT