

\$525,000 - 10411 31 Avenue, Edmonton

MLS® #E4430807

\$525,000

4 Bedroom, 2.50 Bathroom, 1,228 sqft
Single Family on 0.00 Acres

Steinhauer, Edmonton, AB

Great family home 4 level split with large yard, Steinhauer neighborhood double detached garage. RV parking. 4 bedrooms 3 upstairs 1 in the basement. wood burning fireplace. island in kitchen included. Air conditioning

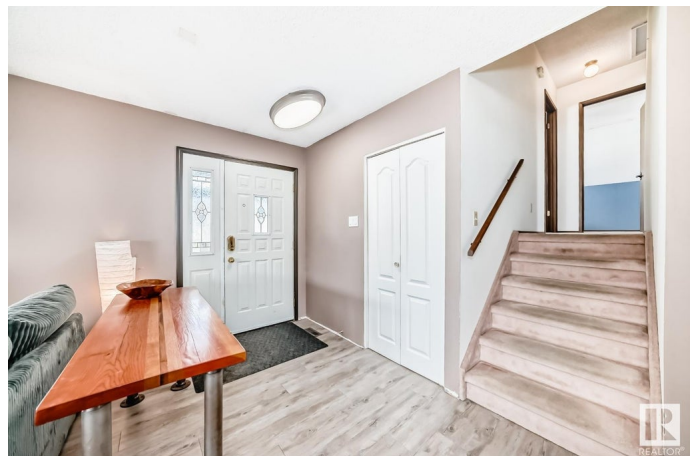
Built in 1975

Essential Information

| | |
|----------------|------------------------|
| MLS® # | E4430807 |
| Price | \$525,000 |
| Bedrooms | 4 |
| Bathrooms | 2.50 |
| Full Baths | 2 |
| Half Baths | 1 |
| Square Footage | 1,228 |
| Acres | 0.00 |
| Year Built | 1975 |
| Type | Single Family |
| Sub-Type | Detached Single Family |
| Style | 4 Level Split |
| Status | Active |

Community Information

| | |
|-------------|-----------------|
| Address | 10411 31 Avenue |
| Area | Edmonton |
| Subdivision | Steinhauer |
| City | Edmonton |



| | |
|-------------|---------|
| County | ALBERTA |
| Province | AB |
| Postal Code | T6J 3K2 |

Amenities

| | |
|----------------|------------------------------------|
| Amenities | Deck |
| Parking Spaces | 5 |
| Parking | Double Garage Detached, RV Parking |

Interior

| | |
|-------------------|--|
| Interior Features | ensuite bathroom |
| Appliances | Air Conditioning-Central, Dishwasher-Built-In, Dryer, Refrigerator, Stove-Electric, Washer |
| Heating | Forced Air-1, Natural Gas |
| Fireplace | Yes |
| Fireplaces | Brick Facing |
| Stories | 4 |
| Has Basement | Yes |
| Basement | Full, Finished |

Exterior

| | |
|-------------------|--------------------|
| Exterior | Wood, Vinyl |
| Exterior Features | Corner Lot |
| Roof | Asphalt Shingles |
| Construction | Wood, Vinyl |
| Foundation | Concrete Perimeter |

Additional Information

| | |
|----------------|------------------|
| Date Listed | April 14th, 2025 |
| Days on Market | 8 |
| Zoning | Zone 16 |

DATA IS DEEMED RELIABLE BUT IS NOT GUARANTEED ACCURATE BY THE REALTORS® ASSOCIATION OF EDMONTON. COPYRIGHT 2025 BY THE REALTORS® ASSOCIATION OF EDMONTON. ALL RIGHTS RESERVED. Trademarks are owned or controlled by the Canadian Real Estate Association (CREA) and identify real estate professionals who are members of CREA (REALTOR®, REALTORS®) and/or the quality of services they provide (MLS®, Multiple Listing Service®)

Listing information last updated on April 22nd, 2025 at 7:17pm MDT