

\$499,900 - 10832 130 Street, Edmonton

MLS® #E4430945

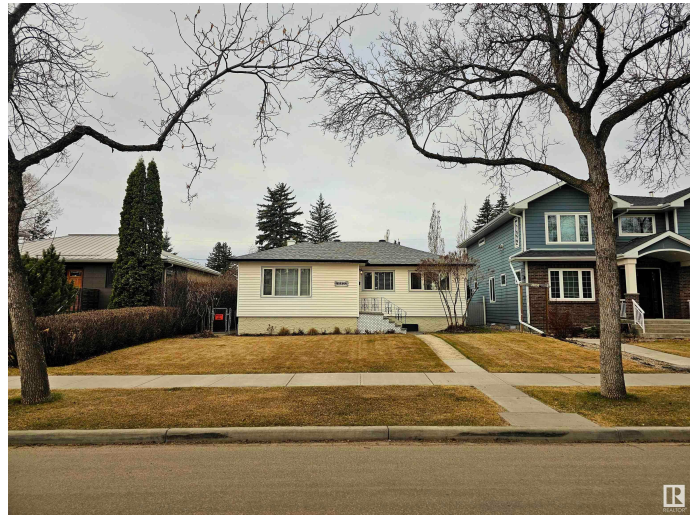
\$499,900

4 Bedroom, 2.00 Bathroom, 965 sqft

Single Family on 0.00 Acres

Westmount, Edmonton, AB

Welcome to historic Westmount - this charming bungalow is situated on a 48' x 140' lot and is the perfect place to call home or redevelopment opportunity for a custom home or potential duplex for the savvy investor! Located near the 124 St. Shopping district, Westmount School & Community League. The main level includes mix of original hardwood + new LVP flooring, 3 bedrooms, updated bathroom, dining nook, and kitchen. The backyard features beautiful trees, plenty of room for planting & outdoor entertaining, as well as a double detached garage. Basement is partially finished with laundry, bathroom, kitchenette area, 4th bedroom and rec space. Updates include: siding, insulation + weeping tile (2007), roof (2015), HWT (2022), garage door opener (2022), vinyl plank flooring (2022), furnace (2006), and triple pane windows & doors (2006).



Built in 1953

Essential Information

MLS® #	E4430945
Price	\$499,900
Bedrooms	4
Bathrooms	2.00
Full Baths	2
Square Footage	965

Acres	0.00
Year Built	1953
Type	Single Family
Sub-Type	Detached Single Family
Style	Bungalow
Status	Active

Community Information

Address	10832 130 Street
Area	Edmonton
Subdivision	Westmount
City	Edmonton
County	ALBERTA
Province	AB
Postal Code	T5M 0X5

Amenities

Amenities	See Remarks
Parking	Double Garage Detached

Interior

Appliances	Garage Control, Garage Opener, Refrigerator, Stove-Electric, Window Coverings
Heating	Forced Air-1, Natural Gas
Stories	1
Has Suite	Yes
Has Basement	Yes
Basement	Full, Partially Finished

Exterior

Exterior	Concrete, Vinyl
Exterior Features	Back Lane, Flat Site, Fruit Trees/Shrubs, Golf Nearby, Playground Nearby, Schools, Subdividable Lot
Roof	Asphalt Shingles
Construction	Concrete, Vinyl
Foundation	Concrete Perimeter

Additional Information

Date Listed	April 15th, 2025
-------------	------------------

Days on Market 8

Zoning Zone 07

DATA IS DEEMED RELIABLE BUT IS NOT GUARANTEED ACCURATE BY THE REALTORS® ASSOCIATION OF EDMONTON. COPYRIGHT 2025 BY THE REALTORS® ASSOCIATION OF EDMONTON. ALL RIGHTS RESERVED. Trademarks are owned or controlled by the Canadian Real Estate Association (CREA) and identify real estate professionals who are members of CREA (REALTOR®, REALTORS®) and/or the quality of services they provide (MLS®, Multiple Listing Service®)

Listing information last updated on April 23rd, 2025 at 11:47am MDT