

\$168,000 - 214 111 Edwards Drive, Edmonton

MLS® #E4436252

\$168,000

2 Bedroom, 2.00 Bathroom, 905 sqft

Condo / Townhouse on 0.00 Acres

Ellerslie, Edmonton, AB

Please note property is sold "as is where is at time of possession". No warranties or representations

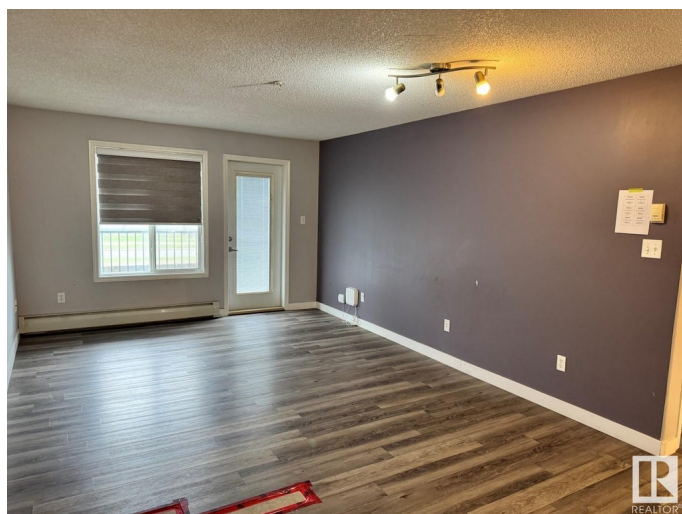
Built in 2006

Essential Information

MLS® #	E4436252
Price	\$168,000
Bedrooms	2
Bathrooms	2.00
Full Baths	2
Square Footage	905
Acres	0.00
Year Built	2006
Type	Condo / Townhouse
Sub-Type	Lowrise Apartment
Style	Single Level Apartment
Status	Active

Community Information

Address	214 111 Edwards Drive
Area	Edmonton
Subdivision	Ellerslie
City	Edmonton
County	ALBERTA
Province	AB
Postal Code	T5X 1G2



Amenities

Amenities	See Remarks
Parking	See Remarks

Interior

Appliances	See Remarks
Heating	Baseboard, Natural Gas
# of Stories	4
Stories	1
Has Basement	Yes
Basement	None, No Basement

Exterior

Exterior	Wood, Stone, Vinyl
Exterior Features	Landscaped, Public Transportation, Schools, Shopping Nearby
Roof	Asphalt Shingles
Construction	Wood, Stone, Vinyl
Foundation	Concrete Perimeter

Additional Information

Date Listed	May 13th, 2025
Days on Market	15
Zoning	Zone 53
RE / Bank Owned	Yes
Condo Fee	\$502

DATA IS DEEMED RELIABLE BUT IS NOT GUARANTEED ACCURATE BY THE REALTORS® ASSOCIATION OF EDMONTON. COPYRIGHT 2025 BY THE REALTORS® ASSOCIATION OF EDMONTON. ALL RIGHTS RESERVED. Trademarks are owned or controlled by the Canadian Real Estate Association (CREA) and identify real estate professionals who are members of CREA (REALTOR®, REALTORS®) and/or the quality of services they provide (MLS®, Multiple Listing Service®)

Listing information last updated on May 28th, 2025 at 6:32pm MDT