

\$139,900 - 220 151 Edwards Drive, Edmonton

MLS® #E4436402

\$139,900

1 Bedroom, 1.00 Bathroom, 638 sqft

Condo / Townhouse on 0.00 Acres

Ellerslie, Edmonton, AB

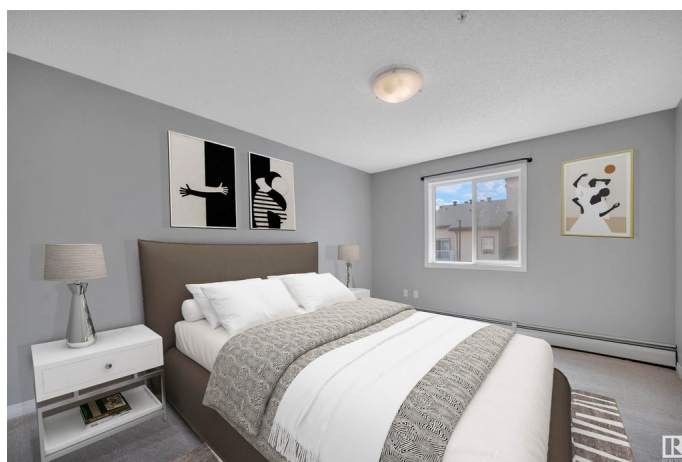
BUDGET FRIENDLY! PRIDE OF OWNERSHIP! IMMEDIATE POSSESSION!

This 638 sq ft 1 bed, 1 bath suite is perfect for the first time buyer or investor! Newer paint, white shaker cabinets, carpet & lino flooring, covered deck, & in suite laundry! 4 pce bathroom, storage room & space for your large couch or sectional! Surface parking stall outside the entryway make parking convenient. Gym area too to burn off some calories! Condo fees of \$423.34 a month includes heat, water/sewer, professional management, etc. Located in desirable Ellerslie only blocks to shopping, restaurants, & quick access to the Henday make the location a winner! *Some photos have been virtually staged*

Built in 2005

Essential Information

| | |
|----------------|-----------|
| MLS® # | E4436402 |
| Price | \$139,900 |
| Bedrooms | 1 |
| Bathrooms | 1.00 |
| Full Baths | 1 |
| Square Footage | 638 |
| Acres | 0.00 |
| Year Built | 2005 |



| | |
|----------|------------------------|
| Type | Condo / Townhouse |
| Sub-Type | Lowrise Apartment |
| Style | Single Level Apartment |
| Status | Active |

Community Information

| | |
|-------------|-----------------------|
| Address | 220 151 Edwards Drive |
| Area | Edmonton |
| Subdivision | Ellerslie |
| City | Edmonton |
| County | ALBERTA |
| Province | AB |
| Postal Code | T6X 1N5 |

Amenities

| | |
|-----------|---|
| Amenities | Exercise Room, Parking-Visitor, Security Door, Storage-In-Suite |
| Parking | Stall |

Interior

| | |
|--------------|--|
| Appliances | Dishwasher-Built-In, Dryer, Hood Fan, Oven-Microwave, Refrigerator, Stove-Electric, Washer |
| Heating | Baseboard, Natural Gas |
| # of Stories | 4 |
| Stories | 1 |
| Has Basement | Yes |
| Basement | None, No Basement |

Exterior

| | |
|-------------------|---|
| Exterior | Wood, Metal, Stone, Vinyl |
| Exterior Features | Golf Nearby, Playground Nearby, Public Swimming Pool, Public Transportation, Schools, Shopping Nearby |
| Roof | Asphalt Shingles |
| Construction | Wood, Metal, Stone, Vinyl |
| Foundation | Concrete Perimeter |

Additional Information

| | |
|----------------|----------------|
| Date Listed | May 14th, 2025 |
| Days on Market | 14 |
| Zoning | Zone 53 |

Condo Fee \$423

DATA IS DEEMED RELIABLE BUT IS NOT GUARANTEED ACCURATE BY THE REALTORS® ASSOCIATION OF EDMONTON. COPYRIGHT 2025 BY THE REALTORS® ASSOCIATION OF EDMONTON. ALL RIGHTS RESERVED.Trademarks are owned or controlled by the Canadian Real Estate Association (CREA) and identify real estate professionals who are members of CREA (REALTOR®, REALTORS®) and/or the quality of services they provide (MLS®, Multiple Listing Service®)

Listing information last updated on May 28th, 2025 at 6:47pm MDT