

# \$149,900 - 21 8745 165 Street, Edmonton

MLS® #E4437723

**\$149,900**

2 Bedroom, 1.00 Bathroom, 905 sqft

Condo / Townhouse on 0.00 Acres

West Meadowlark Park, Edmonton, AB

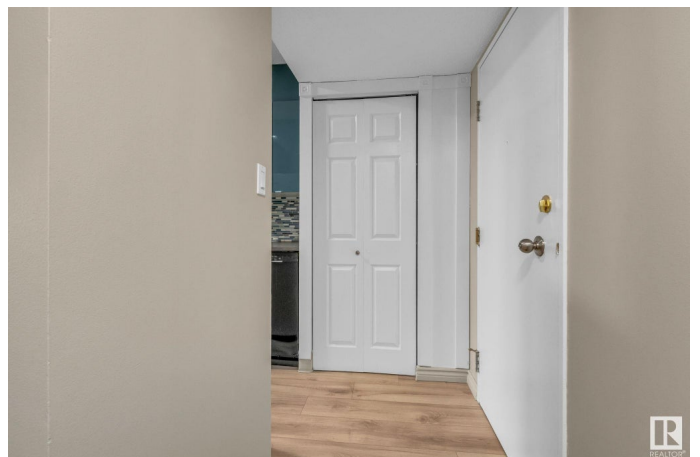
Welcome to Meadowlark Village – a well-kept and move-in-ready concrete condo offering unbeatable value in an unbeatable location. This spacious 2 bedroom 1 bath unit has been freshly painted and features brand new flooring throughout, giving it a clean, modern feel. The updated kitchen boasts refreshed finishes and plenty of cabinet space, perfect for everyday cooking or entertaining. Enjoy the convenience of low condo fees, shared laundry facility bathed in natural light, and the peace of mind that comes with all utilities included. The complex is professionally managed by a reputable property management company, ensuring common areas and maintenance are consistently well looked after. Located just minutes from West Edmonton Mall, the Misericordia Hospital, and a wide range of amenities. Plus, you'll be within walking distance of the new LRT line, offering easy access to downtown and beyond. Whether you're a first-time buyer, investor, or looking to downsize, this home is a fantastic opportunity.

Built in 1970

## Essential Information

MLS® # E4437723

Price \$149,900



Bedrooms	2
Bathrooms	1.00
Full Baths	1
Square Footage	905
Acres	0.00
Year Built	1970
Type	Condo / Townhouse
Sub-Type	Apartment High Rise
Style	Single Level Apartment
Status	Active

### Community Information

Address	21 8745 165 Street
Area	Edmonton
Subdivision	West Meadowlark Park
City	Edmonton
County	ALBERTA
Province	AB
Postal Code	T5R 2R7

### Amenities

Amenities	On Street Parking, Parking-Visitor, Storage Cage
Parking Spaces	1
Parking	Stall

### Interior

Appliances	Dishwasher-Built-In, Refrigerator, Stove-Electric
Heating	Hot Water, Natural Gas
# of Stories	18
Stories	1
Has Basement	Yes
Basement	None, No Basement

### Exterior

Exterior	Concrete, Composition
Exterior Features	Golf Nearby, Landscaped, Playground Nearby, Public Swimming Pool, Public Transportation, Schools, Shopping Nearby
Roof	EPDM Membrane
Construction	Concrete, Composition

Foundation                      Concrete Perimeter

**Additional Information**

Date Listed                      May 22nd, 2025  
Days on Market                2  
Zoning                              Zone 22  
Condo Fee                        \$495

DATA IS DEEMED RELIABLE BUT IS NOT GUARANTEED ACCURATE BY THE REALTORS® ASSOCIATION OF EDMONTON. COPYRIGHT 2025 BY THE REALTORS® ASSOCIATION OF EDMONTON. ALL RIGHTS RESERVED.Trademarks are owned or controlled by the Canadian Real Estate Association (CREA) and identify real estate professionals who are members of CREA (REALTOR®, REALTORS®) and/or the quality of services they provide (MLS®, Multiple Listing Service®)  
Listing information last updated on May 24th, 2025 at 11:47am MDT