

\$569,900 - 16143 141 Street, Edmonton

MLS® #E4437898

\$569,900

4 Bedroom, 2.50 Bathroom, 2,044 sqft

Single Family on 0.00 Acres

Carlton, Edmonton, AB

Beautifully maintained 2,244 sq. ft. home in the family-friendly NW community of Carlton—close to schools, shopping & quick access to Anthony Henday. The open-concept main floor features hardwood flooring, a kitchen with dark cabinets, granite countertops, corner pantry & eat-up island. Enjoy the east-facing backyard from the bright dining area. The cozy living room with gas fireplace is perfect for relaxing. A den/office & 2-pc bath complete this level. Upstairs offers a spacious bonus room, laundry room, & 3 bedrooms including a large primary suite with 5-pc ensuite featuring Jacuzzi tub, separate shower & dual sinks. Two additional bedrooms & a 4-pc bath complete the upper floor. The finished basement includes a rec room, 4th bedroom, roughed-in bath & great storage room. Park with ease in the uniquely finished, insulated double garage. Lovingly cared for, this home offers space, comfort & location—everything your family needs. Don't miss the chance to make it yours!

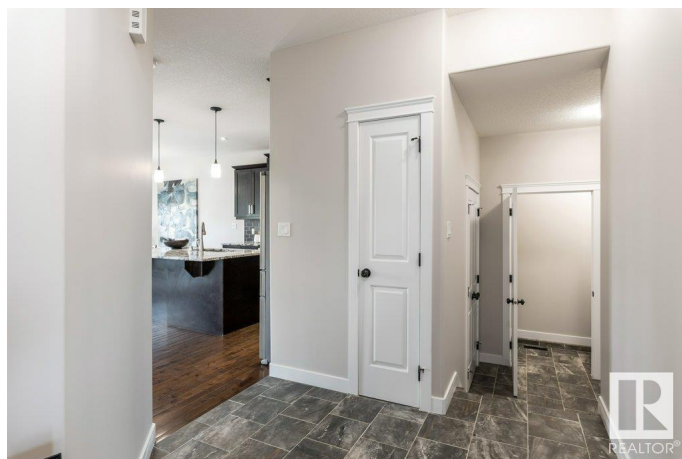
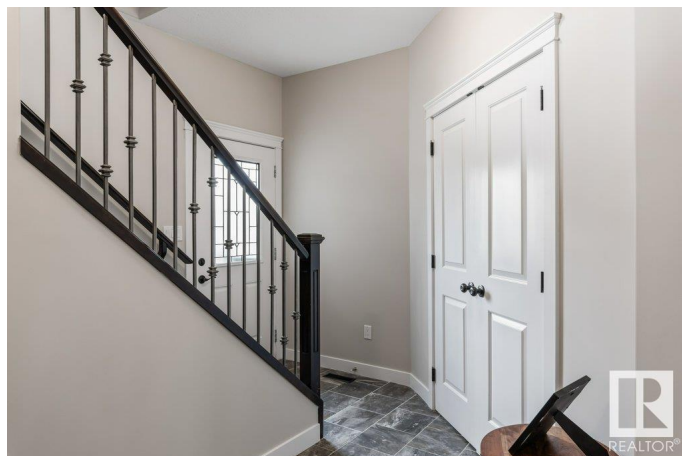
Built in 2013

Essential Information

MLS® # E4437898

Price \$569,900

Bedrooms 4



Bathrooms	2.50
Full Baths	2
Half Baths	1
Square Footage	2,044
Acres	0.00
Year Built	2013
Type	Single Family
Sub-Type	Detached Single Family
Style	2 Storey
Status	Active

Community Information

Address	16143 141 Street
Area	Edmonton
Subdivision	Carlton
City	Edmonton
County	ALBERTA
Province	AB
Postal Code	T6V 0J3

Amenities

Amenities	Deck
Parking	Double Garage Attached

Interior

Interior Features	ensuite bathroom
Appliances	Dishwasher-Built-In, Dryer, Garage Control, Garage Opener, Microwave Hood Fan, Refrigerator, Stove-Electric, Washer, Window Coverings
Heating	Forced Air-1, Natural Gas
Fireplace	Yes
Fireplaces	Mantel, Tile Surround
Stories	3
Has Basement	Yes
Basement	Full, Finished

Exterior

Exterior	Wood, Stone, Vinyl
Exterior Features	Corner Lot, Fenced, Flat Site, Landscaped, Playground Nearby, Public Transportation, Schools, Shopping Nearby

Roof	Asphalt Shingles
Construction	Wood, Stone, Vinyl
Foundation	Concrete Perimeter

Additional Information

Date Listed	May 22nd, 2025
Days on Market	1
Zoning	Zone 27

DATA IS DEEMED RELIABLE BUT IS NOT GUARANTEED ACCURATE BY THE REALTORS® ASSOCIATION OF EDMONTON. COPYRIGHT 2025 BY THE REALTORS® ASSOCIATION OF EDMONTON. ALL RIGHTS RESERVED.Trademarks are owned or controlled by the Canadian Real Estate Association (CREA) and identify real estate professionals who are members of CREA (REALTOR®, REALTORS®) and/or the quality of services they provide (MLS®, Multiple Listing Service®)

Listing information last updated on May 23rd, 2025 at 6:47pm MDT