

## \$489,900 - 48 Longview Crescent, St. Albert

MLS® #E4439120

**\$489,900**

4 Bedroom, 2.50 Bathroom, 1,096 sqft

Single Family on 0.00 Acres

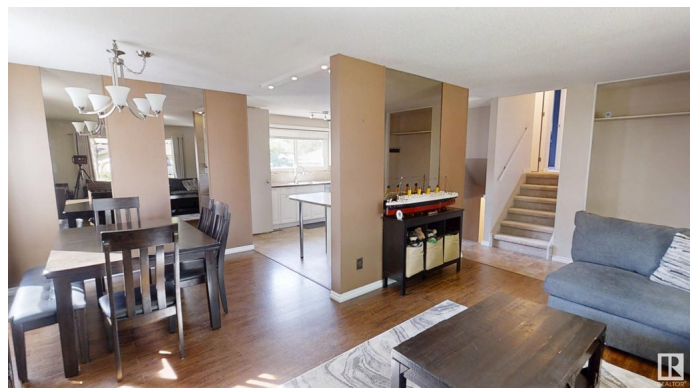
Lacombe Park, St. Albert, AB

Impeccably Maintained Home in Lacombe Park This charming home in quiet Lacombe Park is a must-see! The main level features spacious living and dining rooms with laminate flooring. The updated open kitchen boasts plenty of cabinet space, newer countertops, and a stylish backsplash. Upstairs, find three bedrooms, including a spacious primary with a 2-piece ensuite, plus a renovated 4-piece bathroom. The third level offers a 4th bedroom, 3-piece bath, and cozy family room with a wood-burning fireplace. The finished basement provides a large rec room, perfect for the kids! The gorgeous backyard with deck has room to entertain on the hot summer nights, while the oversized double detached garage (28 x 26) offers ample storage. This well-maintained home is perfect for families â€“ donâ€™t miss out!

Built in 1978

### Essential Information

MLS® #	E4439120
Price	\$489,900
Bedrooms	4
Bathrooms	2.50
Full Baths	2
Half Baths	1
Square Footage	1,096



Acres	0.00
Year Built	1978
Type	Single Family
Sub-Type	Detached Single Family
Style	4 Level Split
Status	Active

### **Community Information**

Address	48 Longview Crescent
Area	St. Albert
Subdivision	Lacombe Park
City	St. Albert
County	ALBERTA
Province	AB
Postal Code	T8N 2W2

### **Amenities**

Amenities	Deck, Front Porch, Vinyl Windows
Parking Spaces	5
Parking	Double Garage Detached, Front Drive Access, Over Sized

### **Interior**

Interior Features	ensuite bathroom
Appliances	Dishwasher-Built-In, Dryer, Garage Control, Garage Opener, Microwave Hood Fan, Oven-Microwave, Refrigerator, Stove-Electric, Vacuum Systems, Washer, Water Softener, Window Coverings
Heating	Forced Air-1, Natural Gas
Fireplace	Yes
Fireplaces	Mantel, Tile Surround
Stories	4
Has Basement	Yes
Basement	Full, Finished

### **Exterior**

Exterior	Wood, Brick, Stucco
Exterior Features	Fenced, Golf Nearby, Landscaped, No Back Lane, Playground Nearby, Schools, Shopping Nearby
Roof	Asphalt Shingles
Construction	Wood, Brick, Stucco

Foundation                      Concrete Perimeter

**School Information**

Elementary                      RonaldHarvey/BerthaKennedy  
Middle                              RonaldHarvey/BerthaKennedy  
High                                Bellerose/St. Albert

**Additional Information**

Date Listed                      May 29th, 2025  
Days on Market                10  
Zoning                              Zone 24

DATA IS DEEMED RELIABLE BUT IS NOT GUARANTEED ACCURATE BY THE REALTORS® ASSOCIATION OF EDMONTON. COPYRIGHT 2025 BY THE REALTORS® ASSOCIATION OF EDMONTON. ALL RIGHTS RESERVED.Trademarks are owned or controlled by the Canadian Real Estate Association (CREA) and identify real estate professionals who are members of CREA (REALTOR®, REALTORS®) and/or the quality of services they provide (MLS®, Multiple Listing Service®)  
Listing information last updated on June 8th, 2025 at 4:02pm MDT