

\$479,900 - 3907 20 Avenue, Edmonton

MLS® #E4439316

\$479,900

6 Bedroom, 3.00 Bathroom, 1,098 sqft

Single Family on 0.00 Acres

Daly Grove, Edmonton, AB

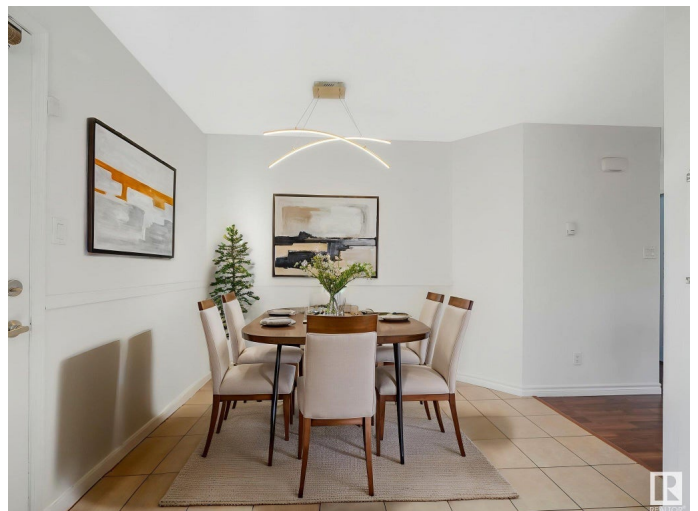
Welcome to a truly special opportunity in South Edmonton—an exceptional WALK UP BI-LEVEL of unbeatable value w/ almost 2,100 SQFT of developed space. This WELL-CARED-for home stands out for its solid craftsmanship, LAYOUT & ABUNDANT SPACE. Upon entry, you™ll be greeted by LARGE BRAND NEW WINDOWS, illuminating every corner of this NEWLY PAINTED home. The UPDATED kitchen, outfitted w/ QUARTZ COUNTERTOPS is a cheerful hub for daily life—a SPACIOUS DINING AREA perfect for family gatherings or guests. Boasting a total of 6 BEDRMS & 3 FULL BATHS, inclng a generous 4PC ENSUITE in the PRIMARY SUITE, this home offers incredible flexibility for large families, multi-generational living, or savvy investors. The FULLY FNSHD WALKUP BSMNT adds even more value w/ 3 ADDTL BEDRMS, a FULL BATH, a LARGE FAMILY RM & 2ND KITCHEN; SEPARATE ENTRNCE —ideal for a future SUITE! Start your summer in your SOUTH-FACING BACKYRD WITH DECK & OVERSIZED DOUBLE GARAGE & extra PARKING SPACE! Close to SCHOOLS, PARKS, PUBLIC TRNSIT & SHOPPING.

Built in 1989

Essential Information

MLS® #

E4439316



Price	\$479,900
Bedrooms	6
Bathrooms	3.00
Full Baths	3
Square Footage	1,098
Acres	0.00
Year Built	1989
Type	Single Family
Sub-Type	Detached Single Family
Style	Bi-Level
Status	Active

Community Information

Address	3907 20 Avenue
Area	Edmonton
Subdivision	Daly Grove
City	Edmonton
County	ALBERTA
Province	AB
Postal Code	T6L 5G3

Amenities

Amenities	Deck, Detectors Smoke, No Animal Home, No Smoking Home, Parking-Extra
Parking Spaces	6
Parking	Double Garage Detached

Interior

Interior Features	ensuite bathroom
Appliances	Dishwasher-Built-In, Dryer, Hood Fan, Oven-Microwave, Washer, Refrigerators-Two, Stoves-Two
Heating	Forced Air-1, Natural Gas
Stories	2
Has Suite	Yes
Has Basement	Yes
Basement	Full, Finished

Exterior

Exterior	Wood, Vinyl
----------	-------------

Exterior Features	Back Lane, Fenced, Landscaped, Playground Nearby, Public Transportation, Schools, Shopping Nearby
Roof	Asphalt Shingles
Construction	Wood, Vinyl
Foundation	Concrete Perimeter

School Information

Elementary	Bisset School
Middle	Kate Chegwin School
High	W.P. Wagner School

Additional Information

Date Listed	May 29th, 2025
Days on Market	3
Zoning	Zone 29

DATA IS DEEMED RELIABLE BUT IS NOT GUARANTEED ACCURATE BY THE REALTORS® ASSOCIATION OF EDMONTON. COPYRIGHT 2025 BY THE REALTORS® ASSOCIATION OF EDMONTON. ALL RIGHTS RESERVED.Trademarks are owned or controlled by the Canadian Real Estate Association (CREA) and identify real estate professionals who are members of CREA (REALTOR®, REALTORS®) and/or the quality of services they provide (MLS®, Multiple Listing Service®)

Listing information last updated on June 1st, 2025 at 4:02pm MDT