

\$469,900 - 2047 Maple Road, Edmonton

MLS® #E4440031

\$469,900

3 Bedroom, 2.50 Bathroom, 1,372 sqft

Single Family on 0.00 Acres

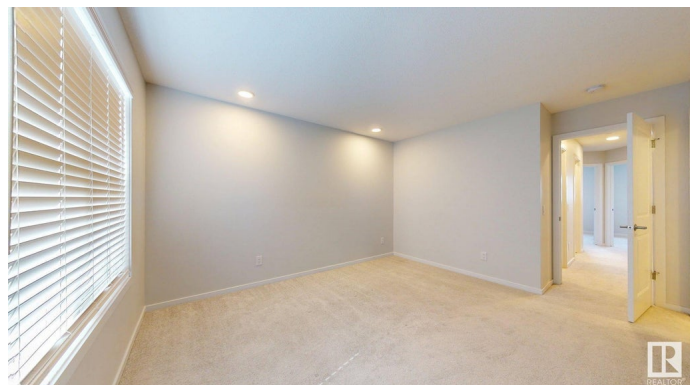
Maple Crest, Edmonton, AB

This beautiful AVI built open concept home Ready to Move in has welcoming entry and living room facing to Maple Playground. U shape kitchen conveniently placed at the end equipped with quartz counter tops, SS appliances. Powder room at the main floor is close to back entry. Upper floor has 3 bedrooms 2 bathrooms + Laundry room with a built in storage. Primary bedroom with 3 piece enSuite w/ walk-in closet & another 4 piece bathroom. The basement is ready to develop with plumbing roughed in for a future bathroom & SEPRATE ENTRY with Concrete Pathway .The backyard is fully landscaped with deck and concrete path to the double detached garage. Close to walking trails, parks ,landmark Cinema,shopping, public transportation, Easy access to Whitemud & Anthony Henday

Built in 2023

Essential Information

MLS® #	E4440031
Price	\$469,900
Bedrooms	3
Bathrooms	2.50
Full Baths	2
Half Baths	1
Square Footage	1,372



Acres	0.00
Year Built	2023
Type	Single Family
Sub-Type	Half Duplex
Style	2 Storey
Status	Active

Community Information

Address	2047 Maple Road
Area	Edmonton
Subdivision	Maple Crest
City	Edmonton
County	ALBERTA
Province	AB
Postal Code	T6T 2T1

Amenities

Amenities	No Animal Home, No Smoking Home, Parking-Visitor
Parking	Double Garage Detached

Interior

Interior Features	ensuite bathroom
Appliances	Dishwasher-Built-In, Dryer, Garage Control, Garage Opener, Hood Fan, Refrigerator, Stove-Countertop Electric, Washer
Heating	Forced Air-1, Natural Gas
Stories	2
Has Basement	Yes
Basement	Full, Unfinished

Exterior

Exterior	Wood, Vinyl
Exterior Features	Airport Nearby, Back Lane, Flat Site, Public Transportation, Shopping Nearby
Roof	Asphalt Shingles
Construction	Wood, Vinyl
Foundation	Concrete Perimeter

Additional Information

Date Listed	June 3rd, 2025
-------------	----------------

Days on Market 9

Zoning Zone 30

DATA IS DEEMED RELIABLE BUT IS NOT GUARANTEED ACCURATE BY THE REALTORS® ASSOCIATION OF EDMONTON. COPYRIGHT 2025 BY THE REALTORS® ASSOCIATION OF EDMONTON. ALL RIGHTS RESERVED. Trademarks are owned or controlled by the Canadian Real Estate Association (CREA) and identify real estate professionals who are members of CREA (REALTOR®, REALTORS®) and/or the quality of services they provide (MLS®, Multiple Listing Service®)

Listing information last updated on June 11th, 2025 at 9:32pm MDT