

# \$25,900 - 440 6 Street, Thorhild

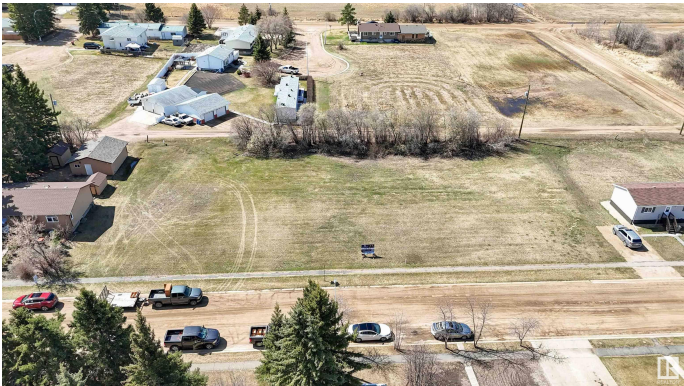
MLS® #E4441376

**\$25,900**

0 Bedroom, 0.00 Bathroom,  
Single Family on 0.00 Acres

Thorhild, Thorhild, AB

Why pay rising land rental fees when you can own your own piece? This 50' x 129' lot welcomes modular homes, offering the perfect canvas to build a custom space that suits your lifestyle. Whether you're a growing family or planning a cozy retirement, investing in your own lot brings stability and financial peace of mind. Picture your dream modular home, designed just the way you want it, all for under \$200,000. Thorhild is more than a place to live—it's a thriving community with everything you need. Enjoy the local parks, a K-12 school, ATB bank, medical & dental clinics, pharmacy, and more. For fun and fitness, the Arena hosts sports and events, and the outdoor pool is perfect for sunny days. With Long Lake just a scenic 40-minute drive away, outdoor adventures are never far. Discover local boutiques, savor delicious Italian cuisine, and experience the charm of small-town living. Stop renting and start building your future in Thorhild—5 lots available, so don't miss out! Low property taxes! \$255.03/year



## Essential Information

MLS® #	E4441376
Price	\$25,900
Bathrooms	0.00
Acres	0.00

Type	Single Family
Sub-Type	Vacant Lot/Land
Status	Active

### Community Information

Address	440 6 Street
Area	Thorhild
Subdivision	Thorhild
City	Thorhild
County	ALBERTA
Province	AB
Postal Code	T0A 3J0

### Exterior

Exterior Features    Back Lane, Flat Site, Schools, Shopping Nearby

### Additional Information

Date Listed	June 9th, 2025
Days on Market	31
Zoning	Zone 60

DATA IS DEEMED RELIABLE BUT IS NOT GUARANTEED ACCURATE BY THE REALTORS® ASSOCIATION OF EDMONTON. COPYRIGHT 2025 BY THE REALTORS® ASSOCIATION OF EDMONTON. ALL RIGHTS RESERVED.Trademarks are owned or controlled by the Canadian Real Estate Association (CREA) and identify real estate professionals who are members of CREA (REALTOR®, REALTORS®) and/or the quality of services they provide (MLS®, Multiple Listing Service®)

Listing information last updated on July 10th, 2025 at 10:02am MDT