

## \$199,000 - 42 2505 42 Street, Edmonton

MLS® #E4443499

**\$199,000**

4 Bedroom, 2.00 Bathroom, 913 sqft

Condo / Townhouse on 0.00 Acres

Bisset, Edmonton, AB

Fantastic opportunity in Bisset. This 913sq ft bungalow features a great layout with a total of 4 bedrooms 2 bathrooms, 2 living areas, partial finished basement, and so much more. This home is in a great location, close to shopping, schools and public transportation. A gem in Bisset with great value.

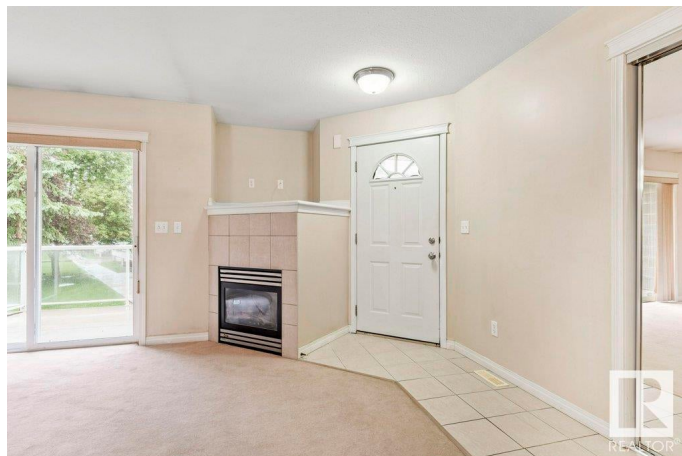
Built in 2002

### Essential Information

|                |                   |
|----------------|-------------------|
| MLS® #         | E4443499          |
| Price          | \$199,000         |
| Bedrooms       | 4                 |
| Bathrooms      | 2.00              |
| Full Baths     | 2                 |
| Square Footage | 913               |
| Acres          | 0.00              |
| Year Built     | 2002              |
| Type           | Condo / Townhouse |
| Sub-Type       | Townhouse         |
| Style          | Bungalow          |
| Status         | Active            |

### Community Information

|             |                   |
|-------------|-------------------|
| Address     | 42 2505 42 Street |
| Area        | Edmonton          |
| Subdivision | Bisset            |



|             |          |
|-------------|----------|
| City        | Edmonton |
| County      | ALBERTA  |
| Province    | AB       |
| Postal Code | T6L 7G8  |

### **Amenities**

|           |   |
|-----------|---|
| Amenities | Carbon Monoxide Detectors, Deck, Front Porch, Parking-Visitor |
| Parking   | Stall   |

### **Interior**

|              |   |
|--------------|---|
| Appliances   | Dryer, Microwave Hood Fan, Refrigerator, Stove-Electric, Washer |
| Heating      | Forced Air-1, Natural Gas                                       |
| Stories      | 2   |
| Has Basement | Yes   |
| Basement     | Full, Partially Finished  |

### **Exterior**

|                   |  |
|-------------------|--|
| Exterior          | Wood, Vinyl  |
| Exterior Features | Flat Site, Golf Nearby, Landscaped, Low Maintenance Landscape, Picnic Area, Playground Nearby, Public Transportation, Schools, Shopping Nearby |
| Roof              | Asphalt Shingles   |
| Construction      | Wood, Vinyl  |
| Foundation        | Concrete Perimeter   |

### **Additional Information**

|                |                 |
|----------------|-----------------|
| Date Listed    | June 20th, 2025 |
| Days on Market | 28              |
| Zoning         | Zone 29         |
| Condo Fee      | \$381           |

DATA IS DEEMED RELIABLE BUT IS NOT GUARANTEED ACCURATE BY THE REALTORS® ASSOCIATION OF EDMONTON. COPYRIGHT 2025 BY THE REALTORS® ASSOCIATION OF EDMONTON. ALL RIGHTS RESERVED. Trademarks are owned or controlled by the Canadian Real Estate Association (CREA) and identify real estate professionals who are members of CREA (REALTOR®, REALTORS®) and/or the quality of services they provide (MLS®, Multiple Listing Service®)

Listing information last updated on July 18th, 2025 at 11:32am MDT