

Courtesy Of Rick Nybakken Of Real Broker

\$103,000 - 739 53222 Range Road 272, Rural Parkland County

MLS® #E4444845

\$103,000

2 Bedroom, 2.00 Bathroom, 952 sqft
Land Lease Community on 0.00 Acres

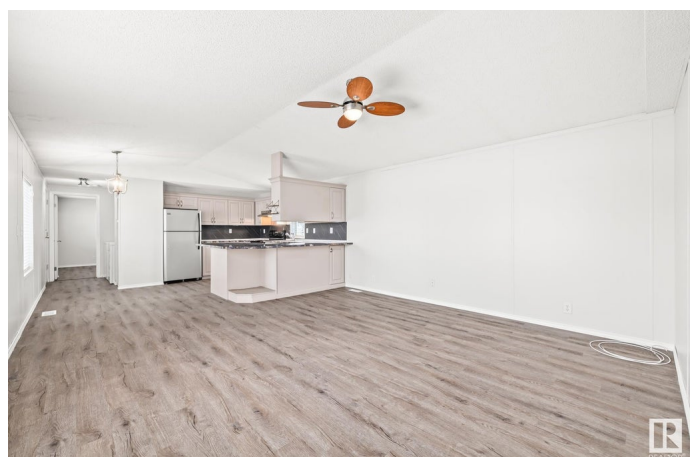
Parkland Village, Rural Parkland County, AB

Nestled on a very quiet street on the western edge of the vibrant Parkland Village community; this updated 2 bedroom, 2 bathroom mobile home offers exceptional comfort, convenience, and peace of mind with a long list of recent upgrades. The home has plenty of natural light, open concept living spaces, a 4-piece en suite in the primary bedroom, a deck for entertaining, two entrances into the home, and a shed for storage. Major improvements include: -New shingles (June 2021) -New insulated metal skirting (Dec 2021) -Updated flooring (July 2023) -New hot water heater (Jan 2024) -New waterline heat tape with double insulation, sewer line heat tape w/foil insulation, Wi-Fi heat tape monitoring unit (Jan 2024) -New cribbing pier (Jan 2024) -New high-efficiency furnace (Oct 2024) -Fresh paint throughout. Enjoy access to a community school, fire hall, community hall, pharmacy, convenience store, pub/restaurant, and scenic park spaces and playgrounds right in the community.

Built in 2000

Essential Information

MLS® #	E4444845
Price	\$103,000



Bedrooms	2
Bathrooms	2.00
Full Baths	2
Square Footage	952
Acres	0.00
Year Built	2000
Type	Land Lease Community
Sub-Type	Detached Single Family
Style	Bungalow
Status	Active

Community Information

Address	739 53222 Range Road 272
Area	Rural Parkland County
Subdivision	Parkland Village
City	Rural Parkland County
County	ALBERTA
Province	AB
Postal Code	T7X 3X6

Amenities

Parking	2 Outdoor Stalls
---------	------------------

Interior

Interior Features	ensuite bathroom
Appliances	Dishwasher-Built-In, Dryer, Hood Fan, Refrigerator, Storage Shed, Stove-Electric, Washer, Curtains and Blinds
Heating	Forced Air-1, Natural Gas

Exterior

Exterior	Wood
Construction	Wood
Foundation	Preserved Wood, Wood

Additional Information

Date Listed	June 27th, 2025
Days on Market	23
Zoning	Zone 70

DATA IS DEEMED RELIABLE BUT IS NOT GUARANTEED ACCURATE BY THE REALTORS® ASSOCIATION OF

EDMONTON. COPYRIGHT 2025 BY THE REALTORS® ASSOCIATION OF EDMONTON. ALL RIGHTS RESERVED.Trademarks are owned or controlled by the Canadian Real Estate Association (CREA) and identify real estate professionals who are members of CREA (REALTOR®, REALTORS®) and/or the quality of services they provide (MLS®, Multiple Listing Service®)

Listing information last updated on July 20th, 2025 at 6:32pm MDT