

\$329,900 - 35 380 Silver Berry Road, Edmonton

MLS® #E4445421

\$329,900

3 Bedroom, 1.50 Bathroom, 1,232 sqft

Condo / Townhouse on 0.00 Acres

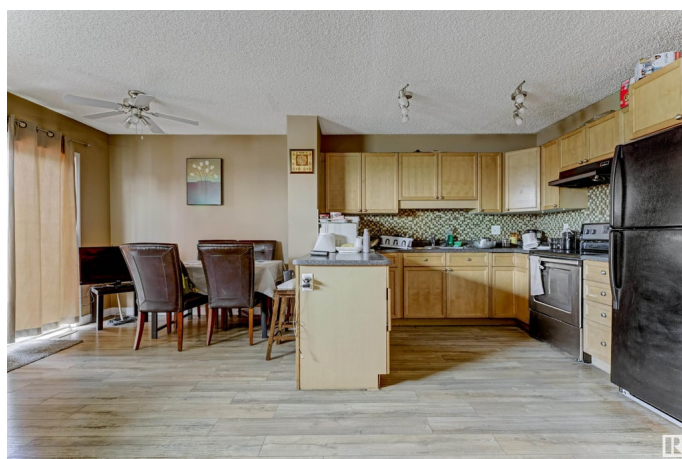
Silver Berry, Edmonton, AB

Welcome to this beautiful two-story townhouse located in Silverberry Pointe. This home boasts an attached single-car garage and an abundance of natural light throughout. The main floor features a spacious open-concept kitchen, living, and dining area—perfect for entertaining and comfortable family living. Upstairs, you’ll find three generously sized bedrooms along with a full bathroom. Additionally, the partially finished basement offers extra living or recreational space. The property is beautifully landscaped and fenced, providing both privacy and curb appeal.

Built in 2007

Essential Information

| | |
|----------------|-------------------|
| MLS® # | E4445421 |
| Price | \$329,900 |
| Bedrooms | 3 |
| Bathrooms | 1.50 |
| Full Baths | 1 |
| Half Baths | 1 |
| Square Footage | 1,232 |
| Acres | 0.00 |
| Year Built | 2007 |
| Type | Condo / Townhouse |
| Sub-Type | Townhouse |
| Style | 2 Storey |



| | |
|--------|--------|
| Status | Active |
|--------|--------|

Community Information

| | |
|-------------|--------------------------|
| Address | 35 380 Silver Berry Road |
| Area | Edmonton |
| Subdivision | Silver Berry |
| City | Edmonton |
| County | ALBERTA |
| Province | AB |
| Postal Code | T6T 0G4 |

Amenities

| | |
|-----------|------------------------|
| Amenities | Deck |
| Parking | Single Garage Attached |

Interior

| | |
|--------------|--|
| Appliances | Dishwasher-Built-In, Dryer, Hood Fan, Refrigerator, Stove-Electric, Washer |
| Heating | Forced Air-1, Natural Gas |
| Stories | 2 |
| Has Basement | Yes |
| Basement | Full, Partially Finished |

Exterior

| | |
|-------------------|---|
| Exterior | Wood, Vinyl |
| Exterior Features | Fenced, Landscaped, Playground Nearby, Public Transportation, Shopping Nearby |
| Roof | Asphalt Shingles |
| Construction | Wood, Vinyl |
| Foundation | Concrete Perimeter |

Additional Information

| | |
|----------------|----------------|
| Date Listed | July 1st, 2025 |
| Days on Market | 4 |
| Zoning | Zone 30 |
| Condo Fee | \$225 |

DATA IS DEEMED RELIABLE BUT IS NOT GUARANTEED ACCURATE BY THE REALTORS® ASSOCIATION OF EDMONTON. COPYRIGHT 2025 BY THE REALTORS® ASSOCIATION OF EDMONTON. ALL RIGHTS RESERVED. Trademarks are owned or controlled by the Canadian Real Estate Association (CREA) and identify real estate professionals who are members of CREA (REALTOR®, REALTORS®) and/or the quality of services they

provide (MLS® , Multiple Listing Service®)
Listing information last updated on July 5th, 2025 at 12:02am MDT