

\$315,000 - 24 901 Normandy Drive, Sherwood Park

MLS® #E4445642

\$315,000

2 Bedroom, 2.50 Bathroom, 1,132 sqft

Condo / Townhouse on 0.00 Acres

Nottingham, Sherwood Park, AB

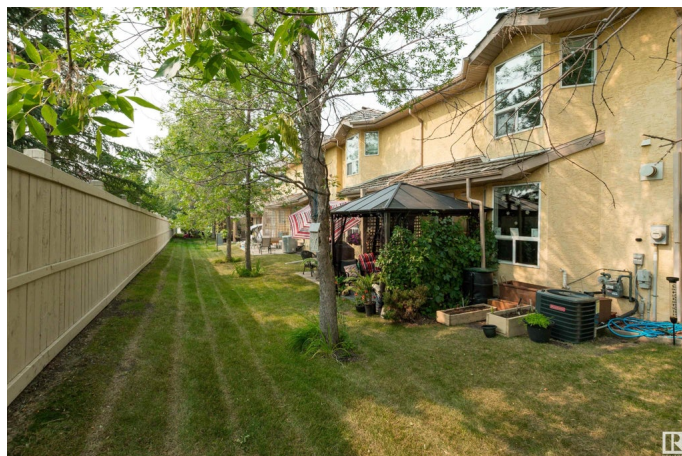
Welcome to this GORGEOUS 2 storey condo in Nottingham! This beauty offers an open and spacious main floor design with hardwood flooring. Featuring a large eat-in kitchen with a newer fridge & stove plus dining area.

Generous living room with attractive gas fireplace. Upstairs are 2 bedrooms and both have beautiful 4 piece ensuites. The FULLY FINISHED BASEMENT features a huge family room, flex space, laundry room and storage space. Beautiful and private backyard with a gazebo and bbq with natural gas. Single attached garage plus room for a second car in front. Well managed complex and a great location close to parks, shopping, restaurants and public transportation. See this gorgeous condo today! Visit REALTOR® website for additional information.

Built in 1998

Essential Information

MLS® #	E4445642
Price	\$315,000
Bedrooms	2
Bathrooms	2.50
Full Baths	2
Half Baths	1
Square Footage	1,132
Acres	0.00



Year Built	1998
Type	Condo / Townhouse
Sub-Type	Townhouse
Style	2 Storey
Status	Active

Community Information

Address	24 901 Normandy Drive
Area	Sherwood Park
Subdivision	Nottingham
City	Sherwood Park
County	ALBERTA
Province	AB
Postal Code	T8A 5V7

Amenities

Amenities	See Remarks
Parking	Single Garage Attached

Interior

Interior Features	ensuite bathroom
Appliances	Air Conditioning-Central, Alarm/Security System, Dishwasher-Built-In, Dryer, Garage Control, Garage Opener, Hood Fan, Refrigerator, Stove-Electric, Washer, Window Coverings
Heating	Forced Air-1, Natural Gas
Fireplace	Yes
Fireplaces	Corner
Stories	3
Has Basement	Yes
Basement	Full, Finished

Exterior

Exterior	Wood, Stucco
Exterior Features	Landscaped, Park/Reserve, Public Transportation, Schools, Shopping Nearby
Roof	Cedar Shakes
Construction	Wood, Stucco
Foundation	Concrete Perimeter

Additional Information

Date Listed	July 3rd, 2025
Days on Market	25
Zoning	Zone 25
Condo Fee	\$399



DATA IS DEEMED RELIABLE BUT IS NOT GUARANTEED ACCURATE BY THE REALTORS® ASSOCIATION OF EDMONTON. COPYRIGHT 2025 BY THE REALTORS® ASSOCIATION OF EDMONTON. ALL RIGHTS RESERVED. Trademarks are owned or controlled by the Canadian Real Estate Association (CREA) and identify real estate professionals who are members of CREA (REALTOR®, REALTORS®) and/or the quality of services they provide (MLS®, Multiple Listing Service®)

Listing information last updated on July 28th, 2025 at 2:32am MDT