

\$219,900 - 206 1031 173 Street, Edmonton

MLS® #E4446140

\$219,900

1 Bedroom, 1.00 Bathroom, 700 sqft

Condo / Townhouse on 0.00 Acres

Windermere, Edmonton, AB

THE BEST IN ADULT LIVING! Welcome to Essence at Windermere South by Cove Properties, one of Edmonton's best condo builders. This gorgeous 18+ unit is ideal for first-time buyers, professionals or anyone looking to downsize and enjoy a maintenance-free lifestyle. Step inside & you'll find quality upgrades throughout: quartz countertops, stainless steel appliances, and extra soundproofing for peace and quiet. The kitchen is spacious, with an I-shaped layout kitchen/living room/ den or dining, plus a large bedroom with walk-in closet that connects to both the ensuite & sliding doors to the open den/dining area. In-suite laundry with storage shelving, plus additional storage room on the same floor (not in the parkade = extra clean and extra secure). Sunny wall-to-wall south-facing windows plus garden doors leading to your covered balcony. Underground parking, low condo fees, amenities at Keswick Landing include Movati, Tesoro & House of Lagree - this is condo perfection!

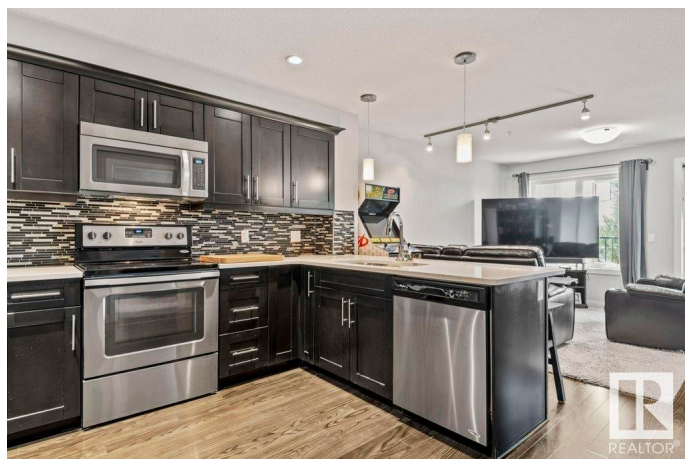
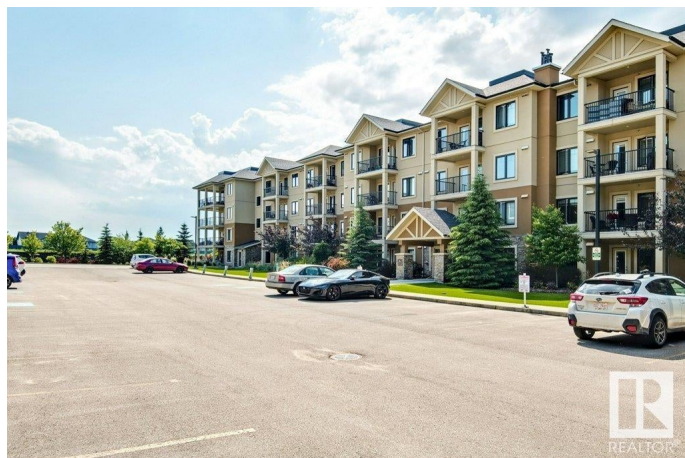
Built in 2014

Essential Information

MLS® # E4446140

Price \$219,900

Bedrooms 1



Bathrooms	1.00
Full Baths	1
Square Footage	700
Acres	0.00
Year Built	2014
Type	Condo / Townhouse
Sub-Type	Lowrise Apartment
Style	Single Level Apartment
Status	Active

Community Information

Address	206 1031 173 Street
Area	Edmonton
Subdivision	Windermere
City	Edmonton
County	ALBERTA
Province	AB
Postal Code	T6W 3E4

Amenities

Amenities	Deck, Parking-Visitor, Secured Parking, Security Door, Storage-Locker Room
Parking	Heated, Underground

Interior

Interior Features	ensuite bathroom
Appliances	Dishwasher-Built-In, Dryer, Microwave Hood Fan, Refrigerator, Stove-Electric, Washer
Heating	In Floor Heat System, Natural Gas
# of Stories	4
Stories	1
Has Basement	Yes
Basement	None, No Basement

Exterior

Exterior	Wood, Composition
Exterior Features	Airport Nearby, Fenced, Flat Site, Golf Nearby, Low Maintenance Landscape, Playground Nearby, Public Transportation, Schools, Shopping Nearby

Roof	Asphalt Shingles
Construction	Wood, Composition
Foundation	Concrete Perimeter

Additional Information

Date Listed	July 4th, 2025
Days on Market	15
Zoning	Zone 56
Condo Fee	\$355

DATA IS DEEMED RELIABLE BUT IS NOT GUARANTEED ACCURATE BY THE REALTORS® ASSOCIATION OF EDMONTON. COPYRIGHT 2025 BY THE REALTORS® ASSOCIATION OF EDMONTON. ALL RIGHTS RESERVED.Trademarks are owned or controlled by the Canadian Real Estate Association (CREA) and identify real estate professionals who are members of CREA (REALTOR®, REALTORS®) and/or the quality of services they provide (MLS®, Multiple Listing Service®)

Listing information last updated on July 19th, 2025 at 2:17am MDT