

\$617,800 - 5407 Parc Runis Way, Beaumont

MLS® #E4448451

\$617,800

3 Bedroom, 2.50 Bathroom, 2,218 sqft

Single Family on 0.00 Acres

Elan, Beaumont, AB

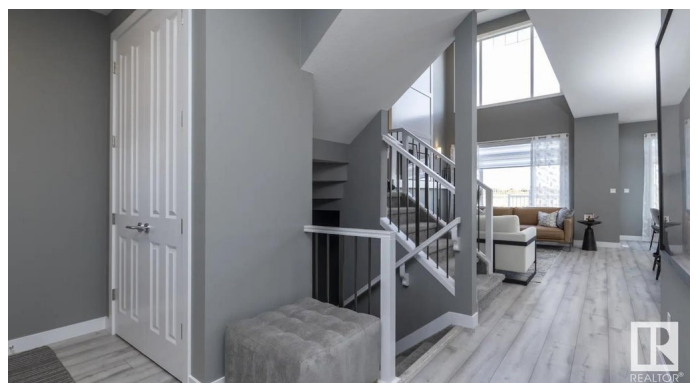
OPEN TO BELOW! Award-winning Crystal Creek Homes presents this stunning two-storey 3 bed, 2.5 bath detached home in the highly desirable community of Elan in Beaumont. This home offers a perfect blend of modern style and everyday comfort. The open-concept main floor features a half bath and a versatile den. The contemporary kitchen includes a walk through pantry to mud room & spacious island that overlooks the bright and airy living room, complete with a cozy fireplace and open to below! Upstairs, you'll find a generous bonus room, a convenient walk-in laundry area, a full bath, and 3 bedrooms. The primary suite includes a walk-in closet and a luxurious ensuite with double sinks & separate tub/shower. This home also comes with a \$5,000 appliance credit, a separate side entrance to the basement, and a **OVSERSIZED** double attached garage! Don't miss your opportunity. **UNDER CONSTRUCTION!** Photos shown are of the same model and are for illustrative purposes only. See 2nd photo for interior colors.

Built in 2025

Essential Information

MLS® # E4448451

Price \$617,800



Bedrooms	3
Bathrooms	2.50
Full Baths	2
Half Baths	1
Square Footage	2,218
Acres	0.00
Year Built	2025
Type	Single Family
Sub-Type	Detached Single Family
Style	2 Storey
Status	Active

Community Information

Address	5407 Parc Runis Way
Area	Beaumont
Subdivision	Elan
City	Beaumont
County	ALBERTA
Province	AB
Postal Code	T4X 2Z7

Amenities

Amenities	Carbon Monoxide Detectors, Ceiling 9 ft., Detectors Smoke, Vinyl Windows, See Remarks, Natural Gas Stove Hookup, 9 ft. Basement Ceiling
Parking	Double Garage Attached

Interior

Interior Features	ensuite bathroom
Appliances	Garage Control, Garage Opener, See Remarks
Heating	Forced Air-1, Natural Gas
Fireplace	Yes
Fireplaces	Mantel
Stories	2
Has Basement	Yes
Basement	Full, Unfinished

Exterior

Exterior	Wood, Metal, Stone, Vinyl
----------	---------------------------

Exterior Features	Playground Nearby, Schools, Shopping Nearby, See Remarks
Roof	Asphalt Shingles
Construction	Wood, Metal, Stone, Vinyl
Foundation	Concrete Perimeter

School Information

Elementary	École Bellevue School
Middle	École Dansereau Meadows
High	École Secondaire Beaumont

Additional Information

Date Listed	July 14th, 2025
Days on Market	13
Zoning	Zone 82

DATA IS DEEMED RELIABLE BUT IS NOT GUARANTEED ACCURATE BY THE REALTORS® ASSOCIATION OF EDMONTON. COPYRIGHT 2025 BY THE REALTORS® ASSOCIATION OF EDMONTON. ALL RIGHTS RESERVED.Trademarks are owned or controlled by the Canadian Real Estate Association (CREA) and identify real estate professionals who are members of CREA (REALTOR®, REALTORS®) and/or the quality of services they provide (MLS®, Multiple Listing Service®)

Listing information last updated on July 27th, 2025 at 12:47pm MDT